

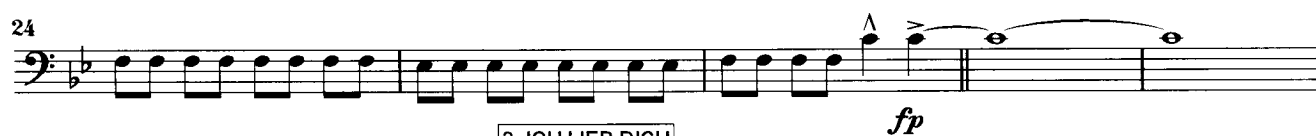
PUR PARTY HITMIX

- Medley -

E-Bass

Musik & Text:
Hartmut Engler & Ingo Reidl
Arrangement: Erwin Jahreis

Dance-Discofox (♩ = 131) 1. FREUNDE



4. WENN DU DA BIST

61 *f*

65

69

73

Detailed description: This section contains four staves of music. The first staff (measures 61-64) starts with a dynamic marking of *f*. The second staff (measures 65-68) continues the pattern. The third staff (measures 69-72) continues. The fourth staff (measures 73) ends with a double bar line and a key signature change to three flats.

5. LENA

77 *mf*

81

85

89

Detailed description: This section contains four staves of music. The first staff (measures 77-80) starts with a dynamic marking of *mf*. The second staff (measures 81-84) continues. The third staff (measures 85-88) continues. The fourth staff (measures 89) ends with a double bar line and a key signature change to two flats.

6. EIN GRAUES HAAR

93 *f* *mf*

99

Detailed description: This section contains two staves of music. The first staff (measures 93-98) starts with a dynamic marking of *f* and includes accents. The second staff (measures 99) starts with a dynamic marking of *mf* and includes first and second endings.

7. FUNKELPERLENAUGEN

105 *f*

110

114

118 *ff* *sfz*

Detailed description: This section contains four staves of music. The first staff (measures 105-109) starts with a dynamic marking of *f* and includes first and second endings. The second staff (measures 110-113) continues. The third staff (measures 114-117) includes first and second endings. The fourth staff (measures 118) ends with a double bar line and dynamic markings of *ff* and *sfz*.

PUR PARTY HITMIX

- Medley -

Bass in Bb

Musik & Text:
Hartmut Engler & Ingo Reidl
Arrangement: Erwin Jahreis

Dance-Discofox (♩ = 131)

1. FREUNDE

Musical notation for the first section of the medley, '1. FREUNDE'. It consists of five staves of music in 4/4 time. The first staff starts with a measure rest of 8 measures, followed by a series of eighth and quarter notes. A dynamic marking of *f* is placed below the second staff. The section concludes with a fermata over a whole note chord.

2. ICH LIEB DICH

fp

Musical notation for the second section of the medley, '2. ICH LIEB DICH'. It consists of four staves of music. The first staff begins with a fermata over a whole note chord, followed by a key signature change to one sharp (F#). A dynamic marking of *f* is placed below the second staff. The section ends with a first ending bracket (1.) and a second ending bracket (2.) leading to a final chord with a fermata.

3. HÖR GUT ZU

Musical notation for the third section of the medley, '3. HÖR GUT ZU'. It consists of four staves of music. The first staff begins with a dynamic marking of *f*. The section concludes with a key signature change to two sharps (F# and C#).

4. WENN DU DA BIST

61 *f*

65

69

73

Detailed description: This section contains four staves of music for the piece '4. WENN DU DA BIST'. The first staff starts at measure 61 with a dynamic marking of *f*. The music is in a major key with a key signature of one sharp (F#). The notation consists of eighth and sixteenth notes, with some rests. The piece concludes at measure 73 with a final note and a double bar line.

5. LENA

77 *mf*

81

85

89

Detailed description: This section contains four staves of music for the piece '5. LENA'. The first staff starts at measure 77 with a dynamic marking of *mf*. The music is in a minor key with a key signature of two flats (Bb). The notation consists of eighth and sixteenth notes, with some rests. The piece concludes at measure 89 with a final note and a double bar line.

6. EIN GRAUES HAAR

93 *f* *mf*

98

103

1. 2.

Detailed description: This section contains three staves of music for the piece '6. EIN GRAUES HAAR'. The first staff starts at measure 93 with a dynamic marking of *f*. The music is in a minor key with a key signature of two flats (Bb). The notation includes accents and dynamic changes to *mf*. The piece concludes at measure 102 with a double bar line. The second staff starts at measure 98, and the third staff starts at measure 103, featuring first and second endings.

7. FUNKELPERLENAUGEN

108 *f*

112 1.

116 2. *ff* *vo* *vo* *vo*

121 *sfz*

Detailed description: This section contains four staves of music for the piece '7. FUNKELPERLENAUGEN'. The first staff starts at measure 108 with a dynamic marking of *f*. The music is in a major key with a key signature of one sharp (F#). The notation includes first and second endings. The second staff starts at measure 112, and the third staff starts at measure 116 with a dynamic marking of *ff* and *vo* markings. The piece concludes at measure 121 with a dynamic marking of *sfz*.

PUR PARTY HITMIX

- Medley -

2. Bass in C

Musik & Text:
Hartmut Engler & Ingo Reidl
Arrangement: Erwin Jahreis

Dance-Discofox (♩ = 131) **1. FREUNDE**



4. WENN DU DA BIST

61 *f*

65

69

73

Detailed description: This section contains musical notation for measures 61 through 73. It is written in bass clef with a key signature of two flats (B-flat and E-flat). The music features a rhythmic pattern of eighth and sixteenth notes. A dynamic marking of *f* (forte) is placed at the beginning of measure 61. The notation includes various rests and articulation marks.

5. LENA

77 *mf*

81

85

89

Detailed description: This section contains musical notation for measures 77 through 89. It is written in bass clef with a key signature of three flats (B-flat, E-flat, and A-flat). The music consists of a steady eighth-note accompaniment. A dynamic marking of *mf* (mezzo-forte) is placed at the beginning of measure 77. The notation includes various rests and articulation marks.

6. EIN GRAUES HAAR

93 *f*

98 *mf*

103

1. 2.

Detailed description: This section contains musical notation for measures 93 through 103. It is written in bass clef with a key signature of three flats. The music features a melodic line with slurs and accents. A dynamic marking of *f* (forte) is placed at the beginning of measure 93, and *mf* (mezzo-forte) is placed at the beginning of measure 98. A first and second ending bracket is shown above measures 102 and 103.

7. FUNKELPERLENAUGEN

108 *f*

112 1.

116 2.

121 *ff* *sfz*

Detailed description: This section contains musical notation for measures 108 through 121. It is written in bass clef with a key signature of two flats. The music features a rhythmic pattern of eighth and sixteenth notes. A dynamic marking of *f* (forte) is placed at the beginning of measure 108. A first and second ending bracket is shown above measures 111 and 112. A dynamic marking of *ff* (fortissimo) is placed at the beginning of measure 116, and *sfz* (sforzando) is placed at the end of measure 121. The notation includes various rests and articulation marks.